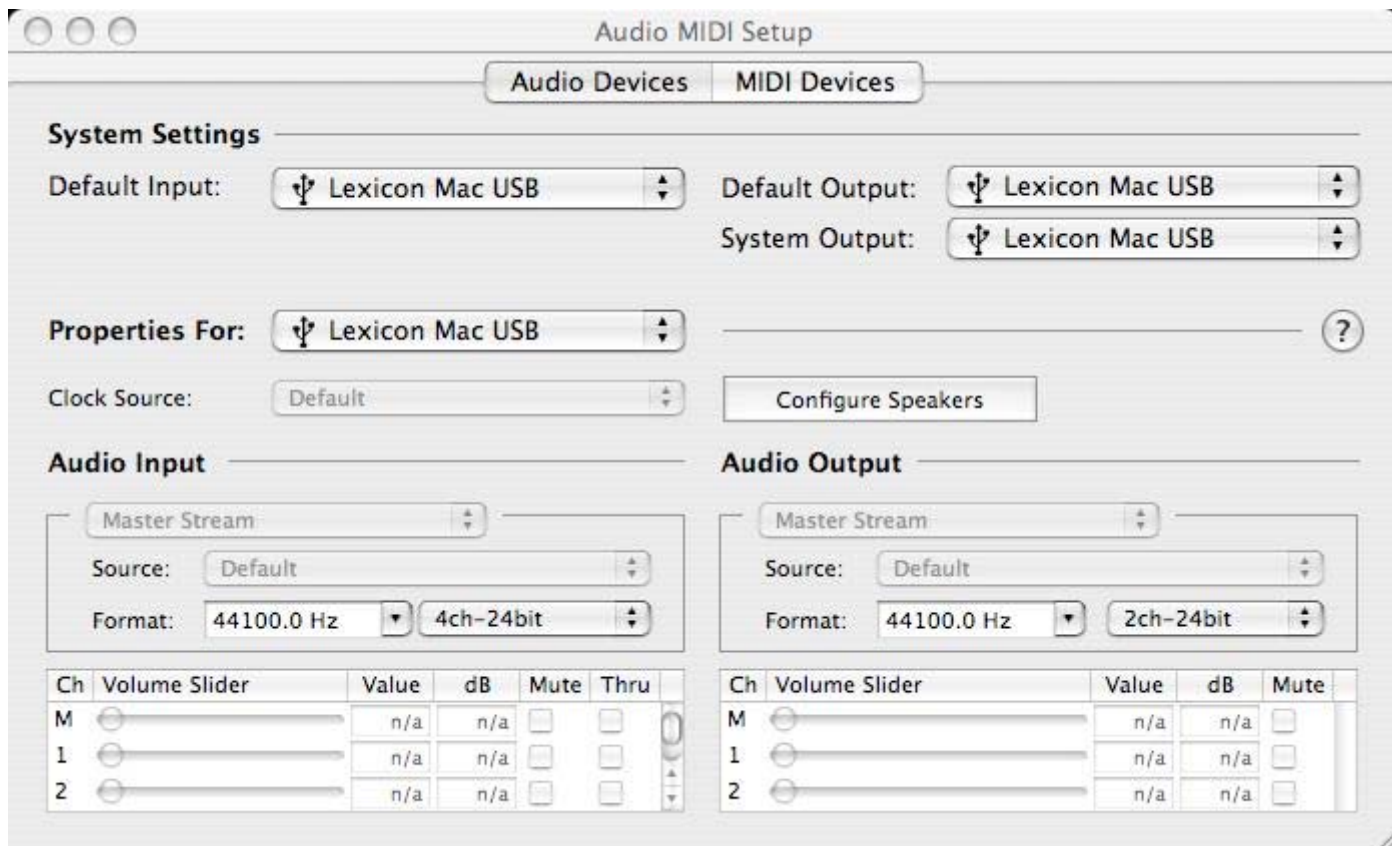


# Omega MAC Setup Guide

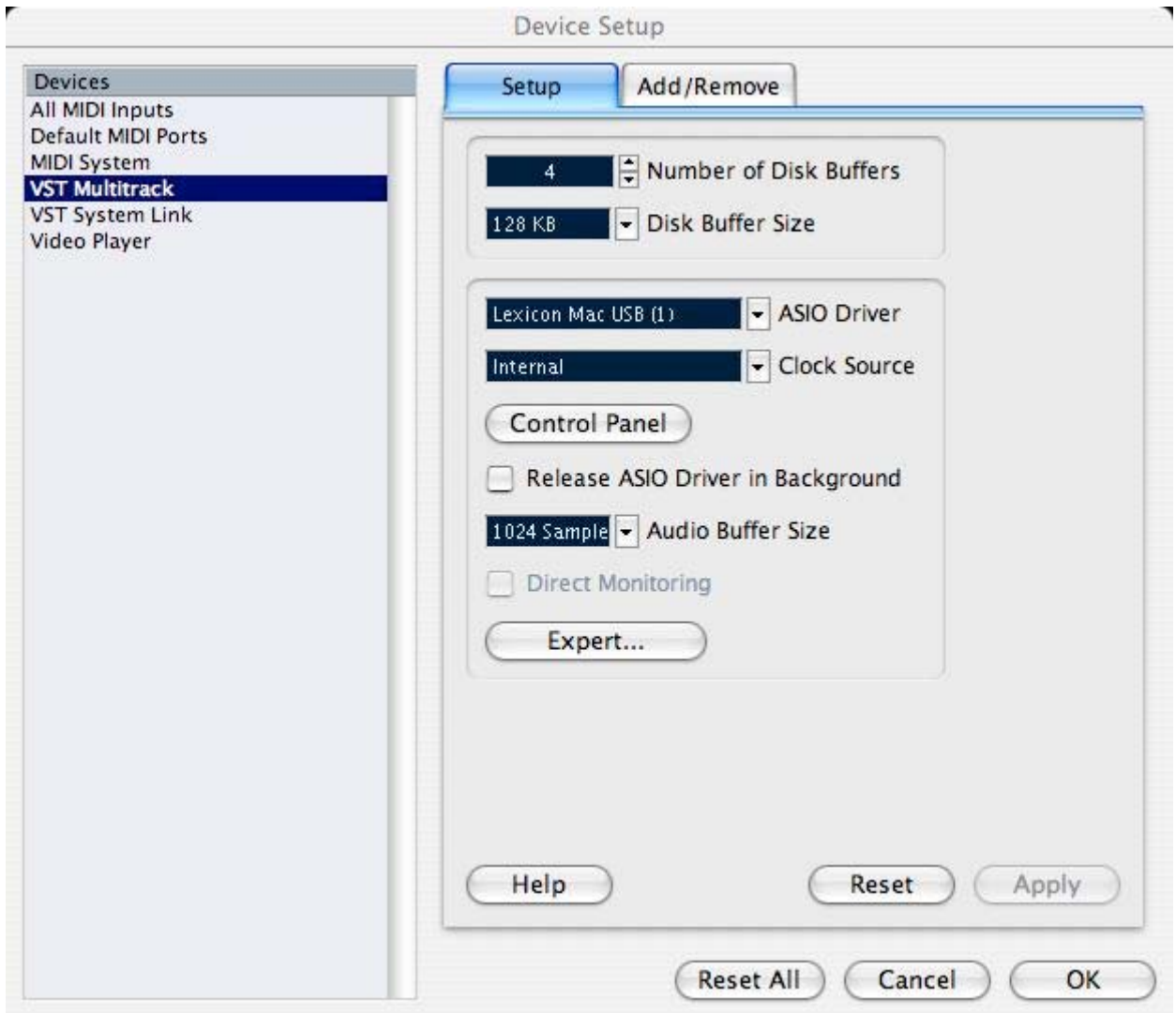
## Cubase LE Setup

When using the Omega with Cubase LE, it will be best to set the Omega as the default audio device under the MAC OS utility "Audio MIDI Setup".

1. Go to the main applications folder and choose the Utilities folder.
2. Start the Audio/MIDI Setup utility application.
3. Set "Lexicon Mac USB" for the Default Input, Default Output and System Output settings.



4. Next, launch the Cubase LE application and choose the section for Devices, Device Setup. Under the VST Multitrack section, choose "Lexicon Mac USB (1)" for the ASIO driver.



5. Click OK.

6. Next, go to Devices, VST Inputs.



**7. Make sure to set both groups of inputs to "Active" (light blue color). If you don't see the second set of inputs, scroll down or increase the window size to reveal both groups.**

**8. Cubase LE is now set properly for use with the Omega.**