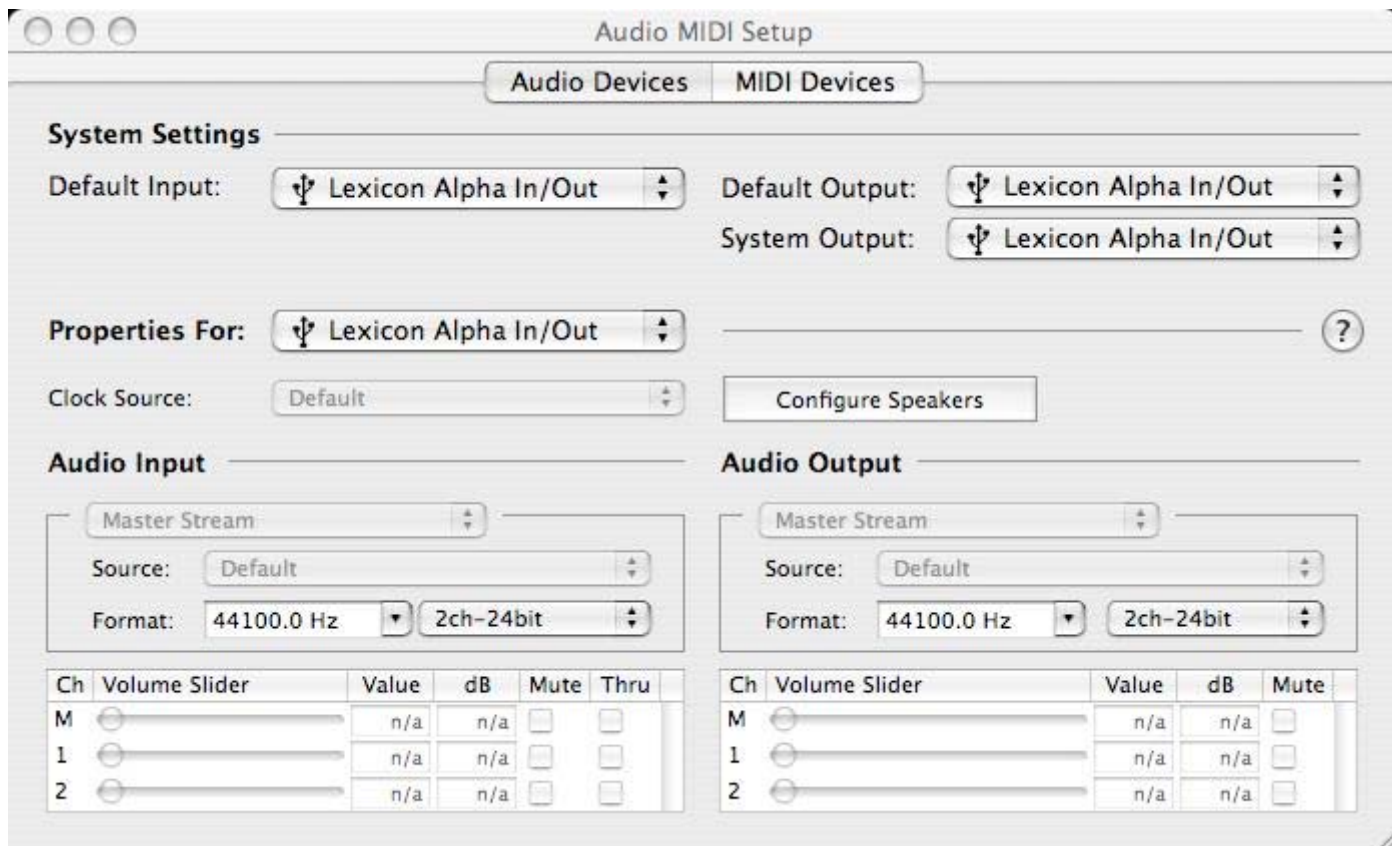


Alpha MAC Setup Guide

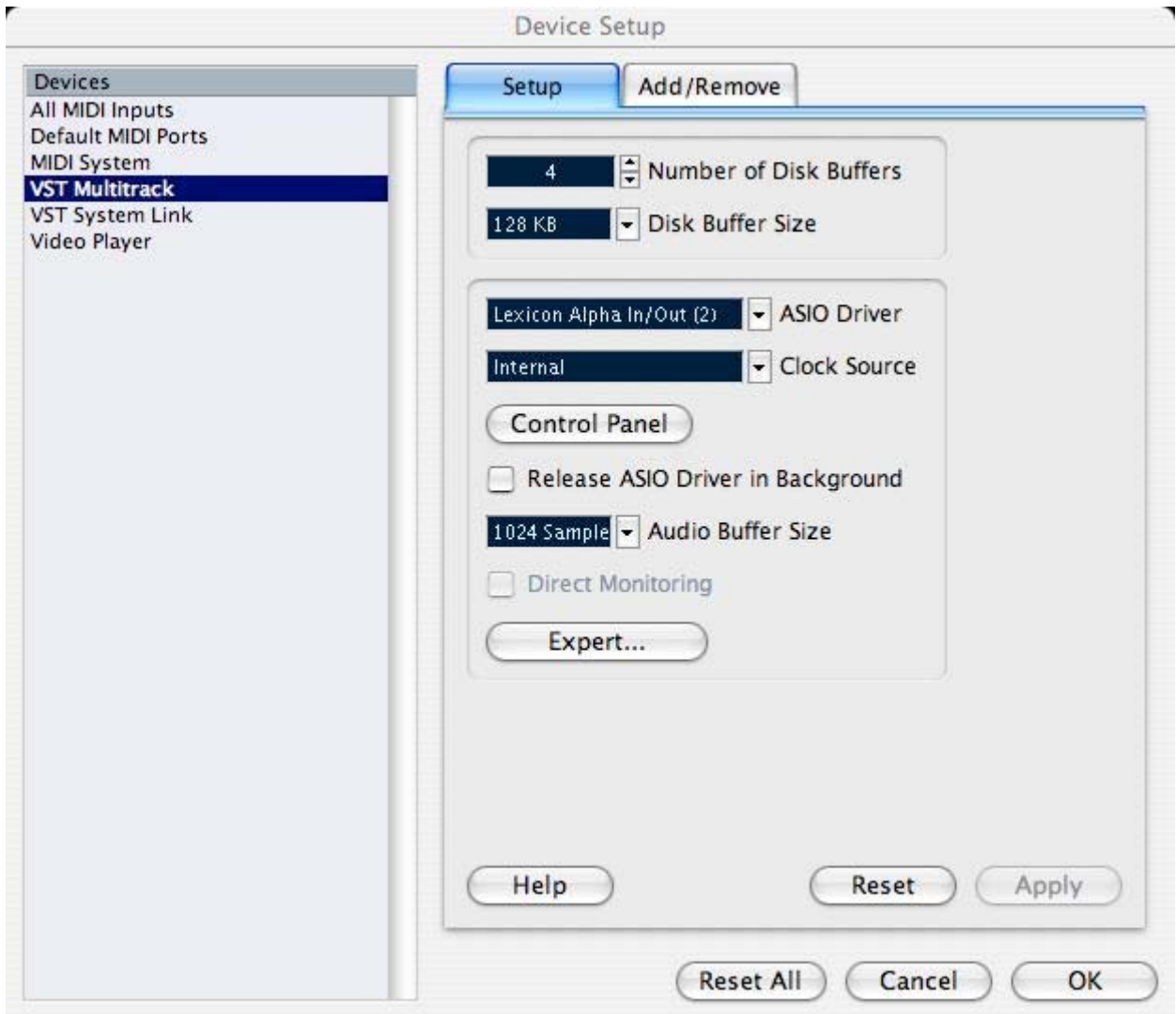
Cubase LE Setup

When using the Alpha with Cubase LE, it will be best to set the Alpha as the default audio device under the MAC OS utility "Audio MIDI Setup".

1. Go to the main applications folder and choose the Utilities folder.
2. Start the Audio/MIDI Setup utility application.
3. Set "Lexicon Alpha In/Out" for the Default Input, Default Output and System Output settings.



4. Next, launch the Cubase LE application and choose the section for Devices, Device Setup. Under the VST Multitrack section, choose "Lexicon Alpha In/Out (2)" for the ASIO driver.



5. Click OK.

6. Next, go to Devices, VST Inputs.



7. Make sure the inputs for Alpha are set to "Active" (light blue color).

8. Cubase LE is now set properly for use with the Alpha.